



DCS

DISTRIBUTED CONTROL SYSTEMS
FOR ENERGY FROM WASTE PLANTS

More than 20 years of
experience in **automation with
cutting edge control systems.**


technikgruppe®
www.technikgruppe.com

Independent worldwide
solution provider.

From Consulting to Training



We are providing state-of-the-art turn-key PROCESS CONTROL SYSTEMS of leading manufacturers.

Over the last 20 years we have developed special process control solutions for the waste incineration processes.

Our focus lies in optimising the combustion process which results in

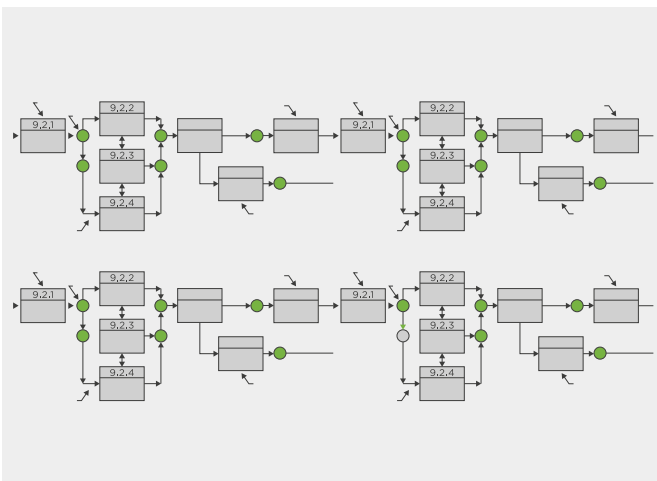
- Stability of steam production
- Stability of combustion air flow
- Stability of flue gas temperature
- Less consumption of additives (Bicarbonate, Lime, Ammonia, ...)
- Less fly ash
- Less slugging and fouling
- Less corrosion
- Less operator interventions
- Better burn out quality

Control technology and operating experience for optimising auxiliary processes like waste mixing, transport, maintenance management, load management are already implemented in our turn-key solution and ready for the new standard EfW 4.0.

We are offering process control systems of the leading manufacturers like

- ABB
- Emerson
- Hima
- Siemens
- Yokogawa,...

Benefits for existing and new plants

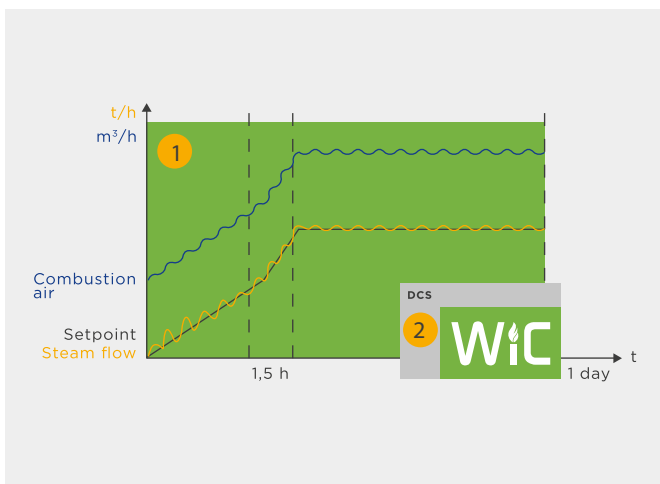


For our full automatic combustion control system WiC we are virtually processing a set of physical equations in the background, in parallel, using 6.500 functional diagrams (instead of approx. 50, like in typical systems). This makes a big difference to all “conventional” classic systems.

This allows us to:

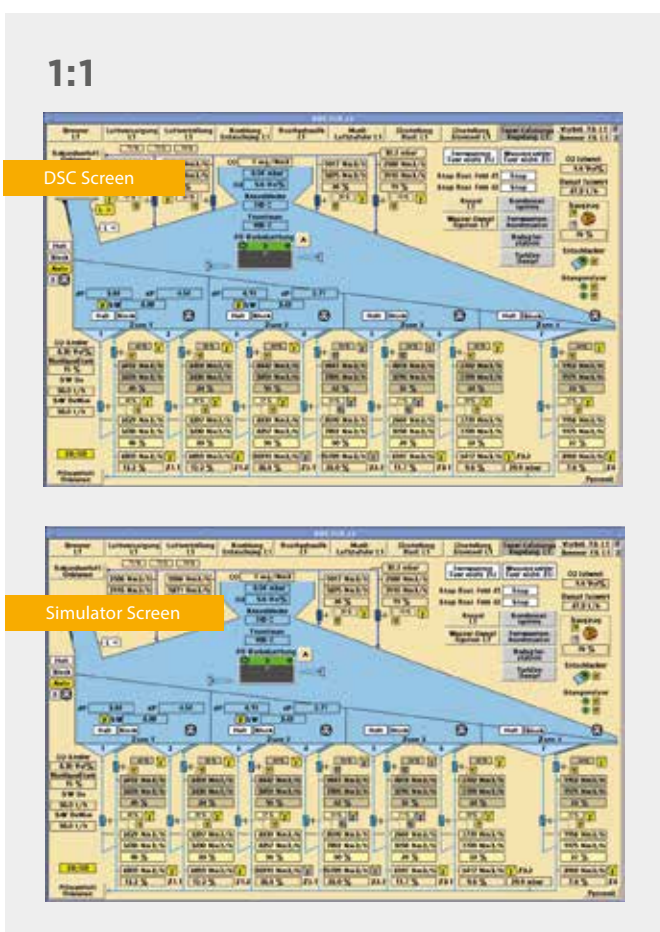
- Accurately predict the state of the on-going combustion process
- intervene intelligently to stabilize and optimize the plants operation
- have the key data available in real time

Save twice on new plants



- 1 With our special Combustion Manager (WiC) installed from day 1, it is possible to speed up the commissioning process providing considerable cost savings in man power and auxiliary fuel (for testing) as well as reducing CO₂ emissions.
- 2 If WiC is integrated into a new plant's DCS a major part of the DCS costs can be saved because many DCS functions (boiler and combustion controls) are already included within the WIC.

1:1 Simulator and Operator training



Waste plant simulator
1:1 SIMULATION

- Start-up and operator training
 - Continuous optimisation of processes and plants
 - Pre-tested and field-tested modules included
- ▼
- Higher efficiency and profitability
 - Significantly shorter commissioning times

TG has an excellent reputation for its operator training programs. Utilizing their own training facilities, and simulator that uses identical screens to the plants own, TG can help to give operators the skills they need to utilize the WiC effectively.

Once trained operators will be able to enhance operational performance, plant availability and profits. This simulation training allows operators to develop their skills without causing problems with real plant operations.

